

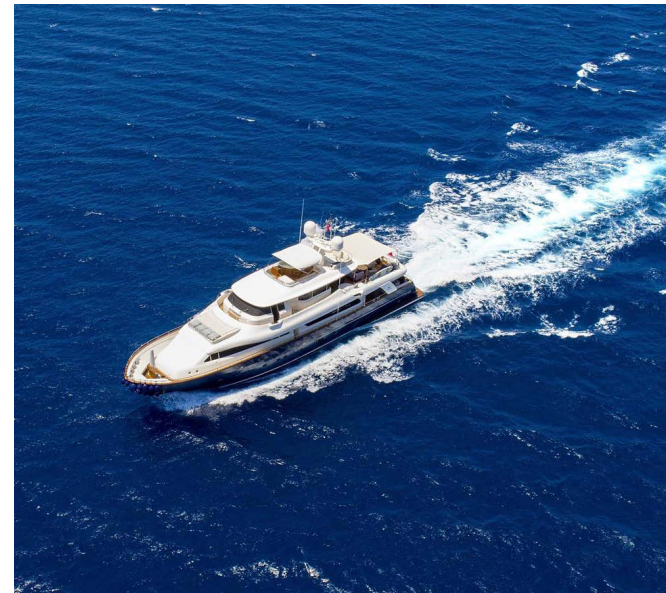
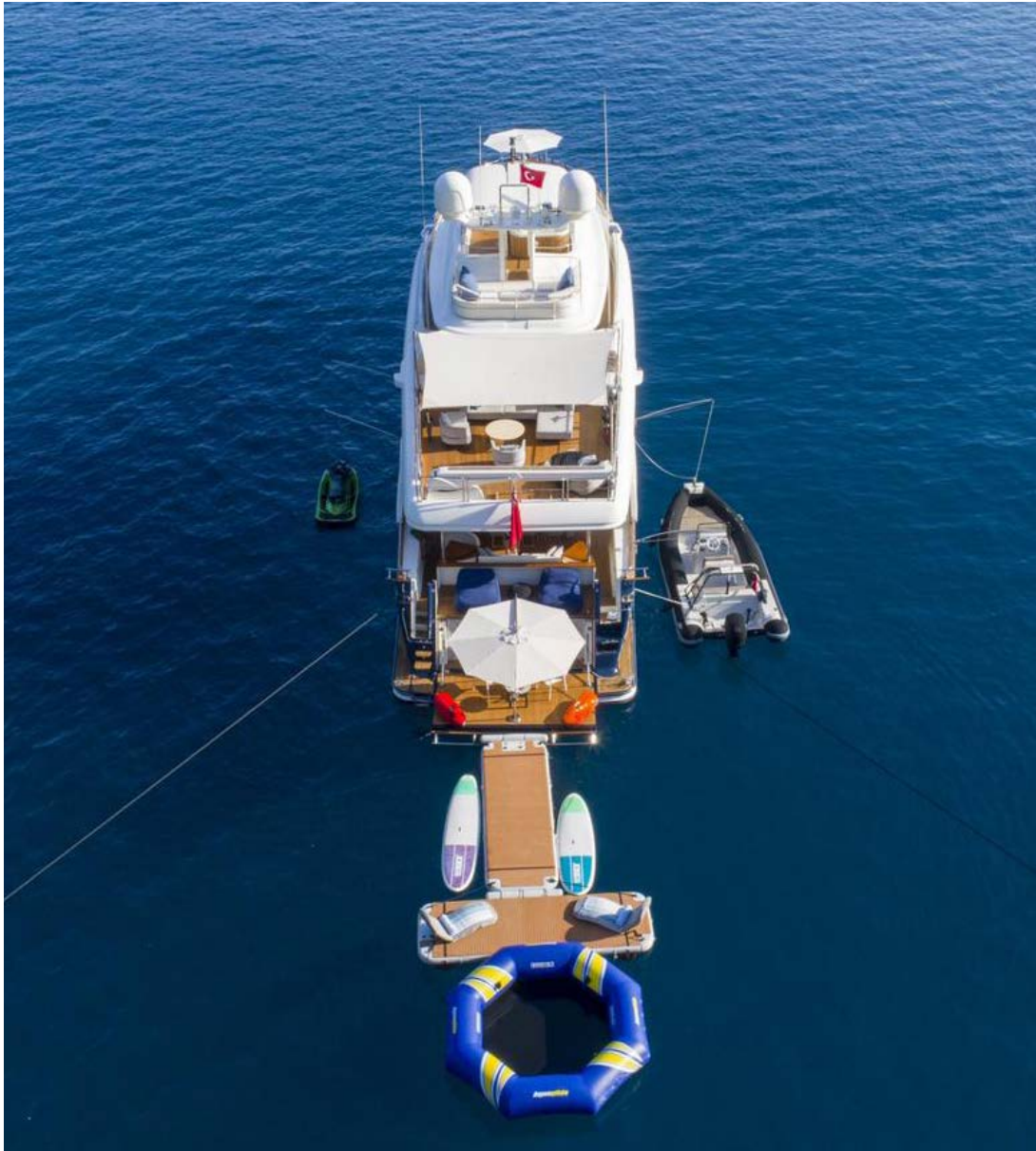


NAVETTA 40M
2007
€ 3,950,000 EX VAT

Exterior



Exterior



Bow



Sun Deck



Upper Deck



Wheelhouse



Flybridge



Saloon



Saloon



Lounge



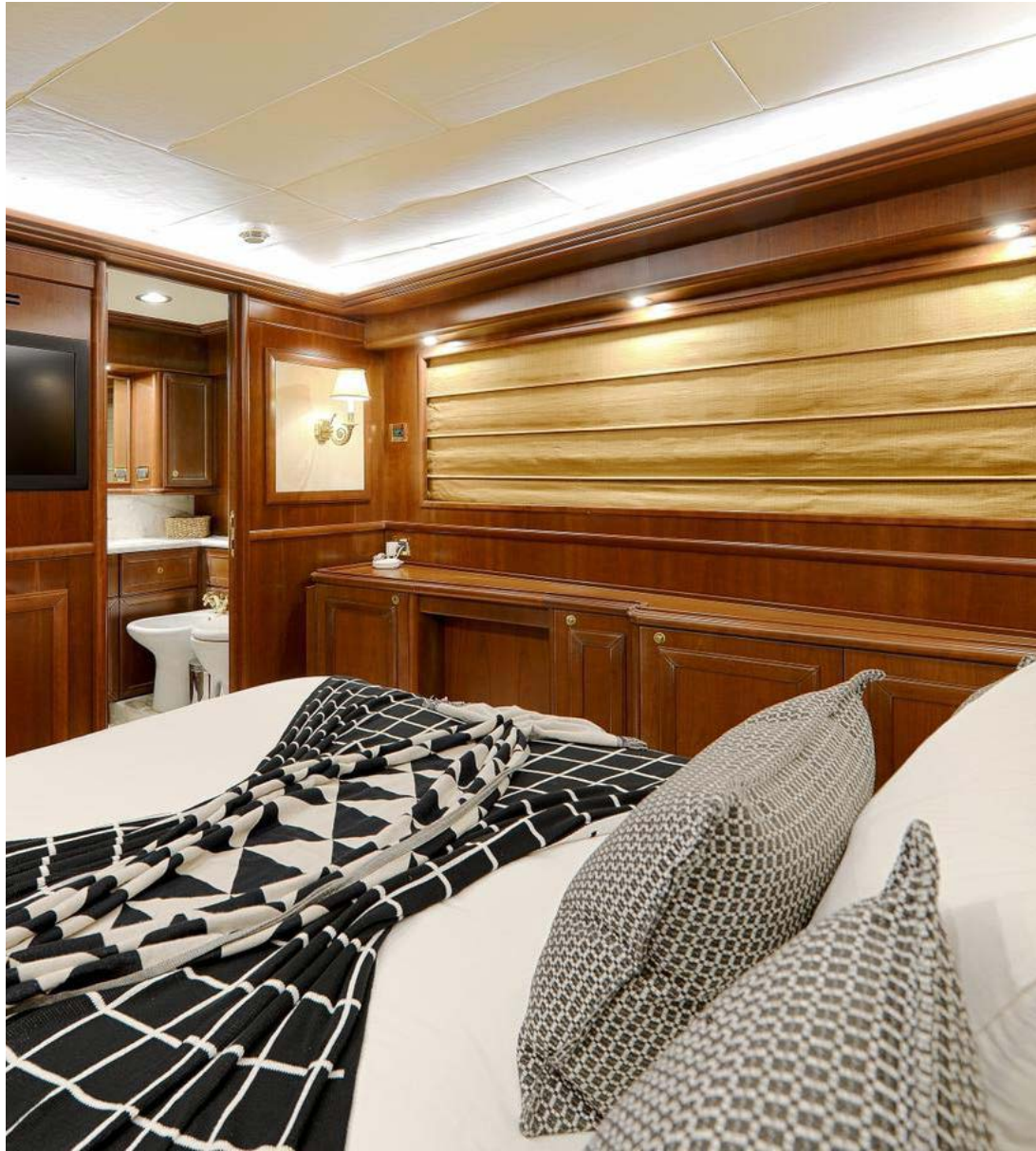
Galley



Master Cabin



Master Cabin



Cabin



Engine Room



Specs

- SHIP YARD: CRN FERETTI ITALY
- SHIP MODEL: COSTOM LINE NAVETTA 30
- LOA: 30,78 m
- BEAM: 6,85 m
- DRAFTS: 2,25 m
- BUILD: 2007
- ENGINES: 2 X1360 BHP MAN V12
- HULL: GRP
- DISPLACEMENT: 116 T
- NET TONAGE: 54 T
- GROSS TONAGE: 180 T
- FUEL CAPACITY: 15000 L
- FRESH WATER CAPACITY: 3500 L
- GREY WATER CAPACITY: 2500 L
- BLACK WATER CAPACITY: 2500 L
- GENERATORS: 2 X 33 KW KOHLER
- WATER MAKER: HIDROMAR 2X180 L / H
- WINDLASS: 2X LOFRANCE ERCOLE VERTICALE 3500 W
- HOT WATER TANK: 2X ARISTON 180L
- FIN STABILIZER: TRAC 250
- GYRO TABILIZER: 3X MITSUBISHI ANTIROOLING GYRO
- BOUTHRUSTER: AMERICAN TRAC HYDROLIC MODEL
- GPS: FRUNO
- RADAR: FRUNO 48 MILE
- AUTO PILOT: SIMRAD
- FIRE SYSTEM: NOTIFIRE AM4000
- FIRE SYSTEM: RINA CLASS CO2 AUTOMATIC FIRE SYSTEM
- CRANE: BEZANZONI HYDROLIC GRAYN 850 KG
- GANGWAY: BEZANZONI HYDROLIC GANGWAY
- AIR COPRESSOR: GIANNESCHI 8 BAR

Specs

- SATTALITE TV: KNS 90 CM
 - DEEP SOUNDER: SIMRAD
 - UNDERWATER LIGHT: LUMITEC
 - AIRCONDATION: CHILLER CONDARIA MAIN UNIT 4 COMPRESSOR
 - AIRCONDATION BLOWER : 23 PEICES FAN COOLER CONDARIA
 - JACUZZI: JET MASSAGE SYSTEM
 - WASHING MACHINE : BOSCH SERIE 8
 - DRY MACHINE: BOSCH SERIE 6
 - COOKING PLATE: MIELE SERAMIC HEATER
 - OWEN: MIELE
 - FIRDGE DEEP FREEZ: LG
 - ICE MACHINE: BREMA 220 V
 - WINE COOLER: NEVADE 220 V
 - BAR FRIDGE: NEVADA 220 V
 - BARBEQUE: ELECTRIC GRILL BBQ
 - TV'S: LG 55" + 3X SONY 50" + 2X 32"
 - WiFi: PEPWAVE 4.5G COM SYSTEM
 - CVV CAMS: ALOHA 8 CCV CAMS NETWORK SYSTEM
 - MUSIC SYSTEM: HEOS AND MARHANZE SOUND WITH NETWORK
 - SPEEKERS: 8 PEICES JL AUDIO SPEEKERS
 - TOILET: JET WACUUM SYSTEM
 - UNBRELLA: 2X INOX UNBRELLA FOR FRONT AND BACK SIDE
 - CABINS: 5 + CREW AREA
- TENDER AND SEA TOYS**
- NORTHSTAR 6.40 M
 - MERCURY 150 HP FOUR STROKE

Disclaimer

All speeds, measurements, capacities, consumptions, etc. may be approximate or estimated. Specifications provided for information only. Data was obtained from sources believed to be reliable and is not guaranteed by owner or brokers. Buyer assumes the responsibility to ascertain the correctness of all data contained herein and otherwise provided and must instruct his agent and surveyors to confirm all details for accuracy prior to purchase. Subject to prior sale, price and inventory change, or withdrawal from market without notice.



For more information please contact: Niso Gado
+972-50-7644438 | niso@azimutyachts.co.il | www.azimutyachts.co.il
